

CUSTOMER:

KOBASHI LTD
Higher Cotley Barn, Cotley Lane,
Dunsford, Devon EX6 7BH
UK

Sample nature: ABSOLUTE
Botanical species: JASMINUM SAMBAC
Reference name: JASMINE
Batch number: 190318-6554-EJAS
Origin: INDIA
Part: FLOWER
Pyrenessences reference: W654

Date of receipt: 25/03/2019 **Date analysis:** 27/03/2019
Packaging: Transparent flask of 2 ml – ambient temperature
Analysis: Classic analysis
Shelf life: 1 year

Comments and conclusions:

Validated report by: Daniel Dantin – *Laboratory manager*



Line Pauset – *Quality manager*



GAS CHROMATOGRAPHY norm NF ISO 11024

Analysis conditions:

CPG 7890 / MS 5975 – Column: VF WAX polar 60 m × 0,25 mm × 0,25 µm

CPG 6890 FID - Column: VF WAX polar 60 m × 0,25 mm × 0,25 µm

Temperature program: 5 mn to 65 °C –5 °C/mn→250 °C – 90 mn to 250 °C

Carrier gas He: 23 psis/MS – 30 psis/FID

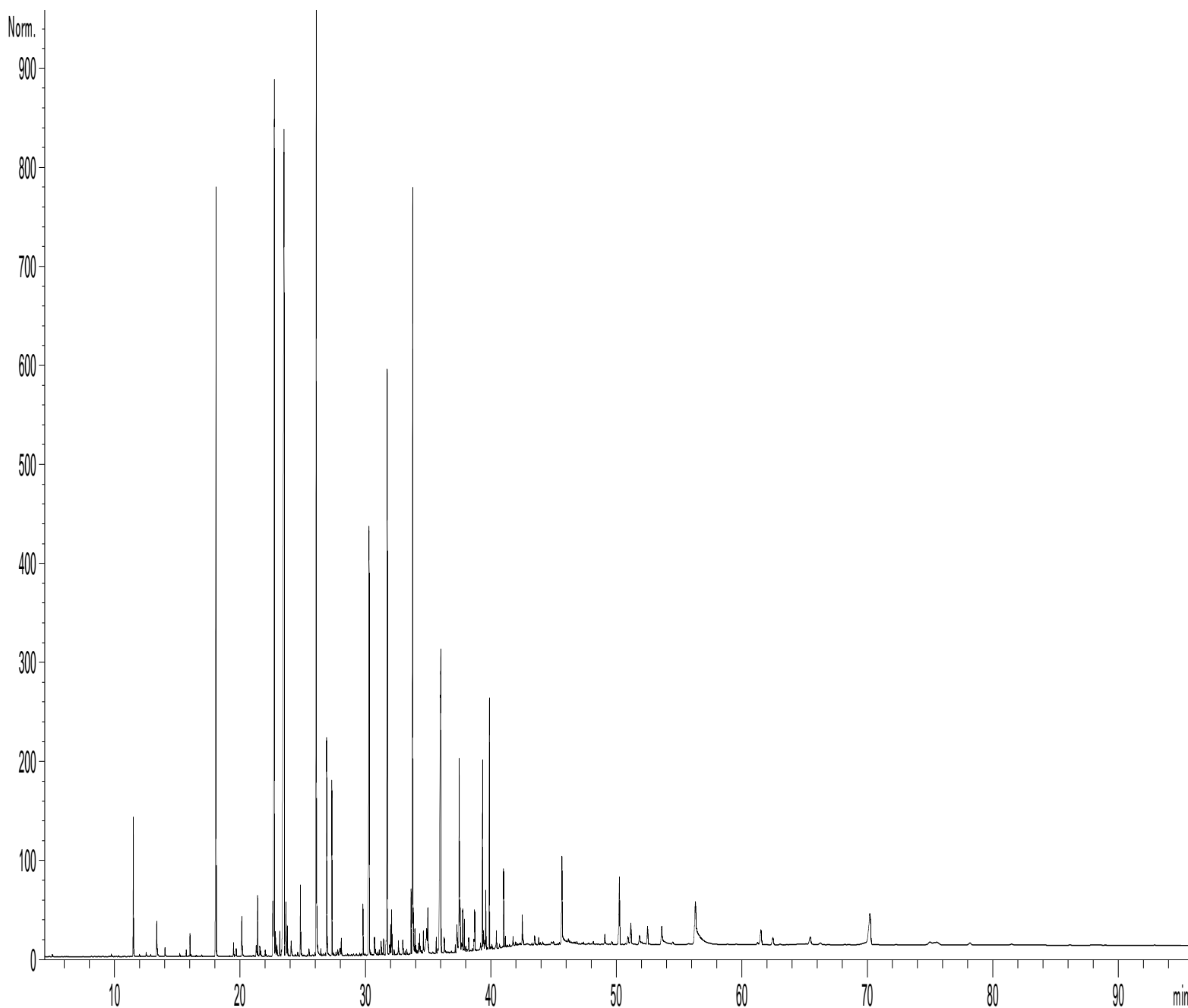
Sample injection / split: 1 µl of 10 % solution in hexane,

Mass range: 30 to 350, Oil compounds are identified by a combination of retention times (our own database) and mass spectra library NKS 75 000 records,

Percentages are calculated from GC/FID peaks areas without using corrections factors,

Chromatographic profile (GC/FID)

FID1 A, (D:\DATA\KOBASHI\W654.D)



Identification results 1: JASMINUM SAMBAC BATCH N° 190318-6554-EJAS

Peak	RT (min)	Compound name	%	Norm (%)	Allergens (%)
1	9,7	Trans-beta-OCIMENE	0,02		
2	11,5	3-HEXEN-1-OL, ACETATE	0,99		
3	11,9	2-HEXEN-1-OL, ACETATE	0,02		
4	12,5	1-HEXANOL	0,04		
5	12,8	2-PENTANONE, 4-HYDROXY-4-METHYL-	0,02		
6	13,4	3-HEXEN-1-OL	0,36		
7	14,0	2-HEXEN-1-OL	0,08		
8	15,2	ACETIC ACID	0,02		
9	15,4	LINALOOL CIS-OXIDE	0,01		
10	15,7	BUTYRATE, 3-HEXENYL	0,05		
11	15,9	alpha-CUBEBENE	0,01		
12	16,0	LINALOOL TRANS-OXIDE	0,18		
13	16,1	HEXENYLIC ESTER	0,02		
14	16,4	HEXENYLIC ESTER	0,01		
15	16,5	BICYCLOELEMENE	0,01		
16	16,9	alpha-COPAENE	0,01		
17	17,5	BENZALDEHYDE	0,01		
18	18,0	LINALOOL	8,28		8,28
19	18,1	SESQUITERPENE	0,03		
20	19,1	SESQUITERPENE	0,01		
21	19,4	beta-ELEMENE	0,11		
22	19,6	SESQUITERPENE	0,01		
23	19,7	beta-CARYOPHYLLENE	0,07		
24	20,1	METHYL BENZOATE	0,43		
25	20,9	SESQUITERPENE	0,01		
26	21,0	HEXENYLIC ESTER	0,01		
27	21,3	ETHYL BENZOATE	0,12		
28	21,4	1-NONANOL	0,45		
29	21,5	alpha-HUMULENE	0,09		
30	21,6	PHENYLMETHYL ESTER	0,06		
31	22,0	gamma-MUUROLENE	0,05		
32	22,1	alpha-TERPINEOL	0,02		
33	22,6	GERMACRENE D	0,52		
34	22,7	BENZYL ACETATE	8,83		
35	22,8	FARNESENE ISOMER	0,26		
36	22,9	alpha-MUUROLENE	0,13		
37	23,1	BICYCLOGERMACRENE	0,22		
38	23,3	SESQUITERPENE	0,05		
39	23,5	alpha-FARNESENE	15,30		
40	23,6	delta-CADINENE	0,62		
41	23,7	gamma-CADINENE	0,31		
42	24,0	METHYL SALICYLATE	0,19		
43	24,4	SESQUITERPENE	0,02		
44	24,6	CADINA-1,4-DIENE	0,03		
45	24,8	2-PHENYLETHYL ACETATE	0,53		

Identification results 2: JASMINUM SAMBAC BATCH N° 190318-6554-EJAS

Peak	RT (min)	Compound name	%	Norm (%)	Allergens (%)
46	24,9	alpha-AMORPHENE	0,03		
47	25,3	CAPROIC ACID	0,01		
48	25,5	GERANIOL	0,07		0,07
49	25,8	E-GERANYL ACETONE	0,02		
50	25,9	ESTER ALIPHATIQUE	0,02		
51	26,0	BENZYL ALCOHOL	8,85		8,85
52	26,4	SESQUITERPENIC OXIDE	0,06		
53	26,6	ALIPHATIC ESTER	0,02		
54	26,8	SESQUITERPENIC OXIDE	0,03		
55	26,9	PHENYLETHYL ALCOHOL	1,91		
56	27,3	PHENYLACETONITRILE	1,43		
57	27,4	ESTER ALIPHATIQUE	0,02		
58	27,6	2,6-DIMETHYL-3,7-OCTADIENE-2,6-DIOL	0,02		
59	27,7	PHYTYL COMPOUND	0,07		
60	27,9	Z-JASMONE	0,05		
61	28,0	SESQUITERPENIC OXIDE	0,06		
62	28,1	SESQUITERPENIC OXIDE	0,15		
63	28,5	Épi-CUBEBOL	0,01		
64	29,0	SESQUITERPENIC OXIDE	0,02		
65	29,2	EICOSANE	0,02		
66	29,5	ALIPHATIC ESTER	0,02		
67	29,6	ALIPHATIC ESTER	0,02		
68	29,7	NEROLIDOL	0,38		
69	29,9	SESQUITERPENOL Mw=222	0,02		
70	30,2	GERMACRENE D-4-OL	4,42		
71	30,3	SESQUITERPENOL	0,04		
72	30,4	SESQUITERPENOL	0,03		
73	30,7	BENZYLIC ESTER	0,16		
74	30,8	n-METHYL-ANTHRANILATE DE METHYLE	0,07		
75	30,9	SESQUITERPENOL	0,03		
76	31,0	SESQUITERPENOL	0,04		
77	31,2	Cis-3-HEXENYL BENZOATE	0,12		
78	31,3	BENZYL TIGLATE	0,02		
79	31,4	PHENYLETHYL ESTER	0,13		
80	31,6	HENEICOSANE	0,08		
81	31,7	Trans-3-HEXENYL BENZOATE	6,33		
82	31,9	10-HENEICOSANE	0,08		
83	32,0	ALIPHATIC ESTER	0,24		
84	32,1	PHENYLETHYL ESTER	0,38		
85	32,3	EUGENOL	0,05		0,05
86	32,5	gamma-EUDESOL	0,01		
87	32,6	T-CADINOL	0,13		
88	32,7	MINT SULFIDE	0,01		
89	32,9	alpha-MUUROLOL	0,13		
90	33,0	EICOSANE	0,06		

Identification results 3: JASMINUM SAMBAC BATCH N° 190318-6554-EJAS

Peak	RT (min)	Compound name	%	Norm (%)	Allergens (%)
91	33,1	delta-CADINOL	0,03		
92	33,3	SESQUITERPENOL	0,04		
93	33,6	METHYL PALMITATE	0,51		
94	33,7	METHYL ANTHRANILATE	6,54		
95	33,8	alpha-CADINOL	0,32		
96	33,9	EICOSENE	0,25		
97	34,0	EICOSENE ISOMER	0,08		
98	34,1	ALIPHATIC ESTER	0,04		
99	34,2	ALIPHATIC ESTER	0,10		
100	34,3	FARNESYL ACETATE	0,15		
101	34,4	ETHYL PALMITATE	0,08		
102	34,5	ALIPHATIC ESTER	0,04		
103	34,6	CINNAMIC ALCOHOL	0,23		
104	34,8	INDOLE ISOMER	0,57		
105	35,0	ALIPHATIC ALCOHOL	0,54		
106	35,3	ALIPHATIC ESTER	0,03		
107	35,6	TRICOSANE	0,14		
108	35,7	METHYL JASMONATE	0,04		
109	35,9	9-TRICOSENE	5,81		
110	36,0	TRICOSENE ISOMER	0,11		
111	36,3	OLEIC ACID	0,19		
112	37,1	ALIPHATIC ESTER	0,06		
113	37,3	BENZOIC ACID	0,38		
114	37,4	INDOLE	1,90		
115	37,5	METHYL STEARATE	0,41		
116	37,6	TETRACOSANE	0,10		
117	37,7	TETRACOSENE	0,39		
118	37,8	METHYL OLEATE	0,30		
119	38,0	ALIPHATIC ESTER	0,07		
120	38,2	ALIPHATIC ESTER	0,16		
121	38,5	HEXADECANAL	0,04		
122	38,6	METHYL-N-ACETYL-ANTHRANILATE	0,10		
123	38,7	METHYL LINOLEATE	0,37		
124	39,1	ALIPHATIC ESTER	0,10		
125	39,3	GERANYLLINALOL	1,54		
126	39,4	PENTACOSENE	0,21		
127	39,5	METHYL-N-FORMYLANTHRANILATE	0,07		
128	39,6	ALIPHATIC ESTER	0,49		
129	39,7	METHYL LINOLENATE	2,48		
130	40,0	ALIPHATIC ESTER	0,06		
131	40,4	ETHYL LINOLEATE	0,17		
132	40,6	ALIPHATIC ESTER	0,06		
133	41,0	BENZYL BENZOATE	0,64		0,64
134	41,1	ALIPHATIC ESTER	0,10		
135	41,7	MYRISTIC ACID	0,09		

Identification results 3: JASMINIUM SAMBAC BATCH N° 190318-6554-EJAS

Peak	RT (min)	Compound name	%	Norm (%)	Allergens (%)
136	41,9	AROMATIC COMPOUND	0,03		
137	42,5	PHENYLETHYL ESTER	0,30		
138	43,4	ALIPHATIC ESTER	0,14		
139	43,8	BENZYL SALICYLATE	0,06		
140	45,6	PALMITIC ACID	1,33		
141	49,0	AROMATIC COMPOUND	0,23		
142	49,6	AROMATIC COMPOUND	0,14		
143	50,2	SQUALENE	1,16		
144	50,9	AROMATIC COMPOUND	0,17		
145	51,1	AROMATIC COMPOUND	0,38		
146	51,8	OLEIC ACID	0,18		
147	52,5	PHENYLETHYL ESTER	0,30		
148	53,6	LINOLEIC ACID	0,49		
149	54,5	AROMATIC COMPOUND	0,04		
150	56,3	LINOLENIC ACID	2,00		
151	61,2	AROMATIC COMPOUND	0,05		
152	61,5	AROMATIC COMPOUND	0,38		
153	62,5	PHENYLETHYL ESTER	0,19		
154	64,4	AROMATIC COMPOUND	0,21		
155	70,2	PHENYLMETHYL LINOLENATE	1,32		
		TOTAL	99,72		17,89