

Customer :

KOBASHI

**Higher Cotley Barn, Cotley Ballard
DUNSFORD, Devon EX6 7BH - U.K.**

Sample Nature : ABSOLUT

Botanical name : JASMINUM GRANDIFLORUM

Common name : JASMIN

Batch number : 190507AH18.001

Origin : EGYPT

Plant part : FLOWER

Our reference : X514

Receipt : 20/05/2019

Analysis date : 23/05/2019

Packaging : Amber flask of 4 ml

Requested analysis : Classic analysis

Sample storage : 1 year - room temperature

Comments and conclusions :

Report validated by : Daniel Dantin - *Laboratory director*



Line Pauset - *Quality manager*

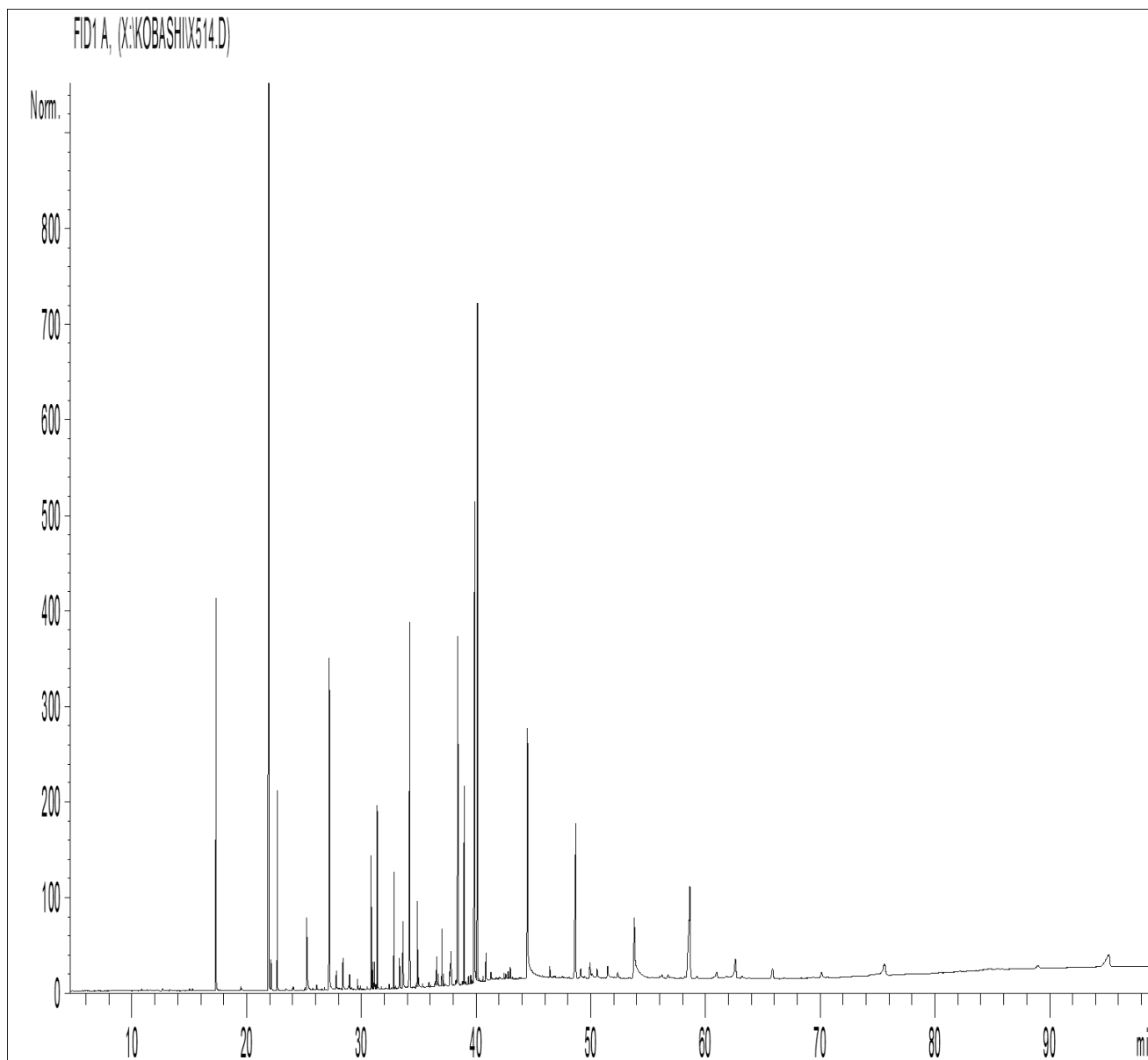


GAS CHROMATOGRAPHY (according to the norm NF ISO 11024)

Analysis conditions :

- . GC/MS Agilent 7890 / 5975 – Column : VF WAX (polaire) 60 m * 0.25 mm * 0.25 µm
- . GC/FID Agilent 6890 – Column : VF WAX (polaire) 60 m * 0.25 mm * 0.25 µm
- . Temperature program : 5 min to 65°C - 5°C/min until 250°C - 90 min to 250°C
- . Carrier gas : He (23 psis/MS – 30 psis/FID)
- . Sample injection / split : 1 µl of 10 % solution in hexane
- . Mass range : 30 to 350 - Oil compounds are identified by a combination of retention times and mass spectra library (our own database and NIST commercial database).
- . Percentages are calculated from GC/FID peaks areas without using corrections factors.

Chromatographic profile :



Identification results : JASMINE EGYPT BATCH N° 190507AH18.001					
Pics	RT (min)	Compound name	%	Norm (%)	Allergens (%)
1	10.9	3-HEXEN-1-OL, ACETATE	0.02		
2	11.3	2-HEXEN-1-OL, ACETATE	0.01		
3	11.6	6-METHYL-5-HEPTEN-2-ONE	0.01		
4	12.2	2-PENTANONE, 4-HYDROXY-4-METHYL-	0.02		
5	12.7	3-HEXEN-1-OL	0.03		
6	13.3	2-HEXEN-1-OL	0.02		
7	15.0	PENTADECANE	0.02		
8	15.3	BUTYRATE, 3-HEXENYL	0.02		
9	17.3	LINALOOL	3.94		3.94
10	17.6	LINALYL ACETATE	0.01		
11	19.5	METHYL BENZOATE	0.08		
12	20.6	ETHYL BENZOATE	0.01		
13	21.1	COMPOUND Mw=134	0.01		
14	21.3	alpha-TERPINEOL	0.01		
15	21.9	BENZYL ACETATE	16.26		
16	22.1	SESQUITERPENE	0.31		
17	22.7	alpha-FARNESENE	2.15		
18	23.4	METHYL SALICYLATE	0.04		
19	24.0	2-PHENYLETHYL ACETATE	0.04		
20	24.1	ALIPHATIC ESTER	0.03		
21	24.7	GERANIOL	0.01		0.01
22	25.1	E-GERANYL ACETONE	0.03		
23	25.2	BENZYL ALCOHOL	1.20		
24	25.8	ALIPHATIC ESTER	0.03		
25	26.1	PHENYLETHYL ALCOHOL	0.09		
26	26.6	NONADECANE	0.02		
27	26.8	COMPOUND Mw=138	0.03		
28	27.2	Z-JASMONE	4.31		
29	27.8	MALTOL Mw=126	0.29		
30	28.1	PHYTYL COMPOUND	0.02		
31	28.2	PHYTYL COMPOUND	0.01		
32	28.4	PHYTYL COMPOUND	0.48		
33	28.9	ALIPHATIC ESTER	0.05		
34	29.0	NEROLIDOL	0.16		
35	29.1	ALIPHATIC ESTER	0.02		
36	29.7	p-CRESOL	0.13		
37	29.9	BENZYLIC ESTER	0.04		
38	30.5	BENZYL TIGLATE	0.04		
39	30.9	Trans-3-HEXENYL BENZOATE	1.34		
40	31.0	HENEICOSANE	0.29		
41	31.2	PENTADECANONE TRIMETHYL	0.28		
42	31.3	PHENYLETHYL ESTER	0.06		
43	31.4	EUGENOL	2.01		2.01
44	31.7	SESQUITERPENOL	0.02		
45	32.4	2,7-OCTADIENE-1,6-DIOL, 2,6-DIMETHYL	0.05		
46	32.7	AROMATIC COMPOUND	0.02		
47	32.9	METHYL PALMITATE	1.34		
48	33.0	AROMATIC COMPOUND	0.04		
49	33.3	FURANIC COMPOUND	0.42		
50	33.6	Z-JASMOLACTONE	1.09		

Identification results : JASMINE EGYPT BATCH N° 190507AH18.001					
Pics	RT (min)	Compound name	%	Norm (%)	Allergens (%)
51	34.0	ETHYL PALMITATE	0.02		
52	34.2	ISOPHYTOL	5.73		
53	34.8	ALIPHATIC ESTER	0.05		
54	34.9	METHYL JASMONATE	0.94		
55	35.0	ISOEUGENOL	0.16		0.16
56	35.3	COMPOUND Mw=208	0.04		
57	35.9	METHYL JASMONATE ISOMER	0.09		
58	36.4	BENZOIC ACID	0.11		
59	36.6	INDOLE	0.42		
60	36.7	METHYL STEARATE	0.14		
61	37.0	METHYL OLEATE	0.59		
62	37.2	ALIPHATIC ESTER	0.12		
63	37.7	METHYL-N-ACETYL-ANTHRANILATE	0.30		
64	37.8	ALIPHATIC ESTER	0.63		
65	38.3	METHYL LINOLEATE	0.11		
66	38.4	PHYTYL ACETATE	5.14		
67	38.5	GERANYLLINALOL	2.11		
68	38.8	ALIPHATIC ESTER	0.06		
69	39.0	METHYL LINOLENATE	2.34		
70	39.4	ALIPHATIC ESTER	0.09		
71	39.5	ETHYL LINOLEATE	0.08		
72	39.9	PHYTOL	8.96		
73	40.1	BENZYL BENZOATE	8.88		8.88
74	40.3	AROMATIC COMPOUND	0.05		
75	40.6	MYRISTIC ACID	0.05		
76	40.9	AROMATIC COMPOUND	0.34		
77	41.3	AROMATIC COMPOUND	0.12		
78	42.4	AROMATIC COMPOUND	0.06		
79	42.6	ETHYL LINOLENATE	0.10		
80	42.8	BENZYL SALICYLATE	0.10		0.10
81	43.0	AROMATIC COMPOUND	0.16		
82	44.5	PALMITIC ACID	5.87		
83	46.4	TETRAMETHYLHEPTADECANOLIDE	0.16		
84	48.7	SQUALENE	3.77		
85	49.1	AROMATIC COMPOUND	0.21		
86	49.9	OLEIC ACID	0.36		
87	50.1	AROMATIC COMPOUND	0.19		
88	50.6	PHENYLETHYL ESTER	0.21		
89	51.5	LINOLEIC ACID	0.33		
90	52.3	AROMATIC COMPOUND	0.18		
91	53.8	LINOLENIC ACID	2.97		
92	56.7	AROMATIC COMPOUND	0.12		
93	57.0	AROMATIC COMPOUND	0.04		
94	58.6	EPOXYSQUALENE Mw=426	4.13		
95	61.0	SQUALENE ISOMER	0.28		
96	62.6	PHENYLMETHYL LINOLENATE	0.81		
97	65.9	AROMATIC COMPOUND	0.40		
98	70.1	PHENYLMETHYL ESTER	0.23		
99	75.6	AROMATIC COMPOUND	1.26		
100	95.2	COMPOUND Mw=278	1.37		
		TOTAL	97.96		15.10